



石墨烯铜球形颗粒

Graphene copper spherical particles

石墨烯/铜复合粉末具有独特的石墨烯包覆球形铜粉的核壳结构，石墨烯与铜的复合充分发挥了两者的力学、电学及热学的协同优势。

Graphene/copper composite powder has a unique core-shell structure of graphene coated spherical copper powder, and the composite of graphene and copper fully utilizes the synergistic advantages of their mechanics, electricity, and thermodynamics.

产品优势 Product advantages

- 核壳结构：单层或少层石墨烯完整包覆铜粉
- Core shell structure: Single or few layers of graphene fully coated copper powder
- 高强高导：石墨烯铜复合导线抗拉强度可达 800 MPa, 导电率可达 110 %IACS
- High strength and high conductivity: The tensile strength of graphene copper composite wires can reach 800 MPa, and the conductivity can reach 110% IACS
- 均匀性好：高质量少层石墨烯与铜基体的均匀分散
- Good uniformity: uniform dispersion of high-quality few layer graphene and copper matrix
- 导热性好：与铜相比，导热率提高 30%以上
- Good thermal conductivity: Compared with copper, the thermal conductivity increases by more than 30%
- 抗氧化性：解决了纯铜易氧化的问题
- Antioxidant properties: Solved the problem of easy oxidation of pure copper
- 良好流动性：粉末球形率达 99%以上，流动性极佳
- Good flowability: The powder has a spherical rate of over 99% and excellent flowability

Nanjing JCNano Technology Co., Ltd

Add : Room 914, block C, No. 181 Xianlin Avenue, Qixia District Nanjing

Postalcode : 210015

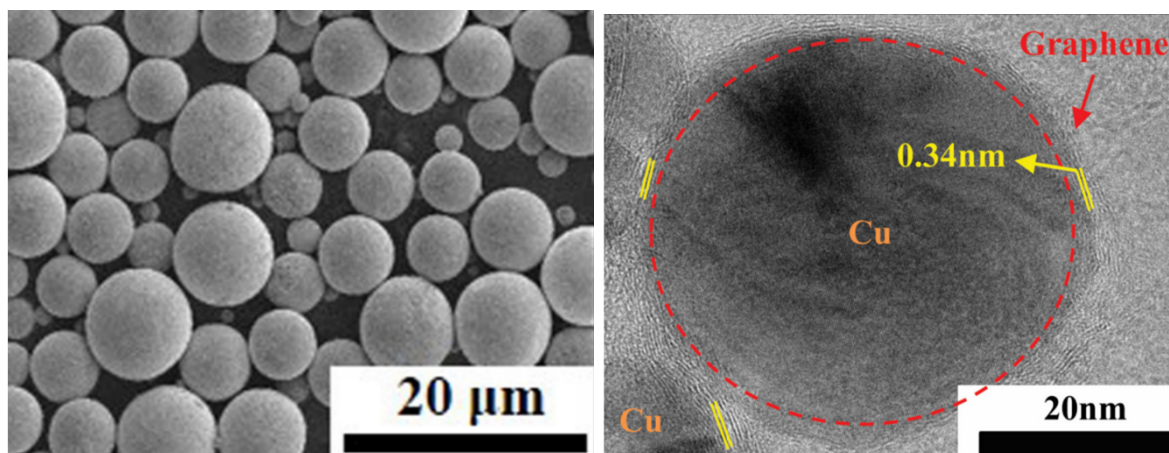
www.jcno.net

Tel : 0086-25-58830538 400-025-7300

• 激光吸收率高：红光激光吸收率达 60%以上

• High laser absorption rate: Red laser absorption rate reaches over 60%

序号	项目	数值
1.	石墨烯含量	0.01~0.05%
2.	粒径	0~50um
3.	球形度	≥95%
4.	堆积密度	≥4g/cm ³
5.	流动性	≤20S/50g
6.	石墨烯层数	≤5 层



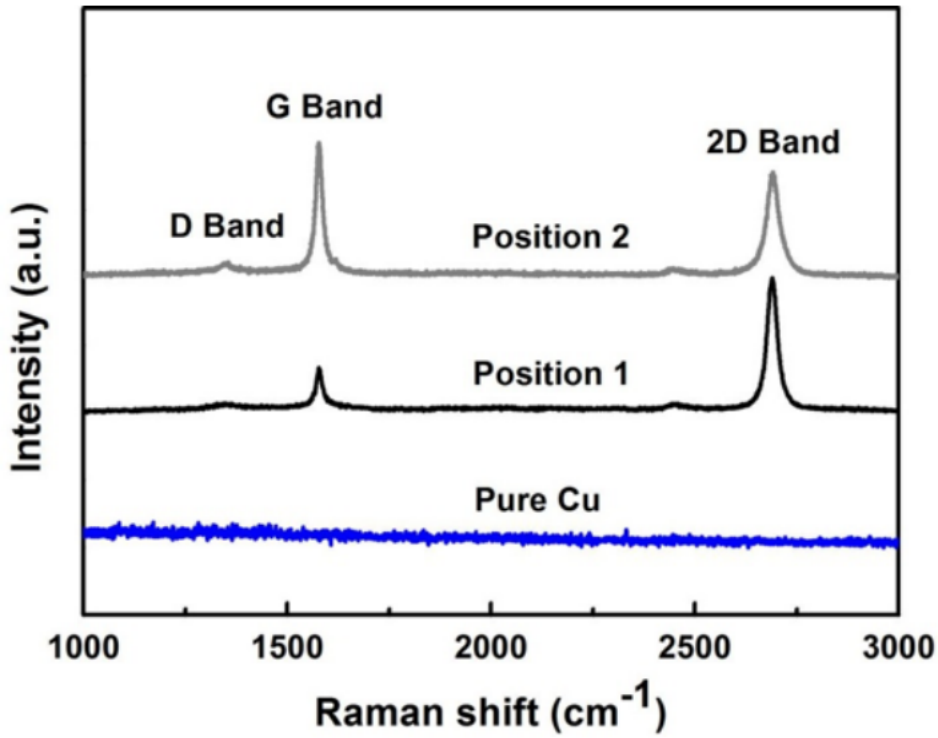
Nanjing JCNano Technology Co., Ltd

Add : Room 914, block C, No. 181 Xianlin Avenue, Qixia District Nanjing

Postalcode : 210015

www.jcno.net

Tel : 0086-25-58830538 400-025-7300



应用方向:

- 1、粉末冶金、导电浆料、3D 打印等。



Nanjing JCNano Technology Co., Ltd

Add : Room 914, block C, No. 181 Xianlin Avenue, Qixia District Nanjing

Postalcode : 210015

www.jcno.net

Tel : 0086-25-58830538 400-025-7300